



DRAGON

Series
DT 1-20KVA

1/1 PH or 3/1 PH

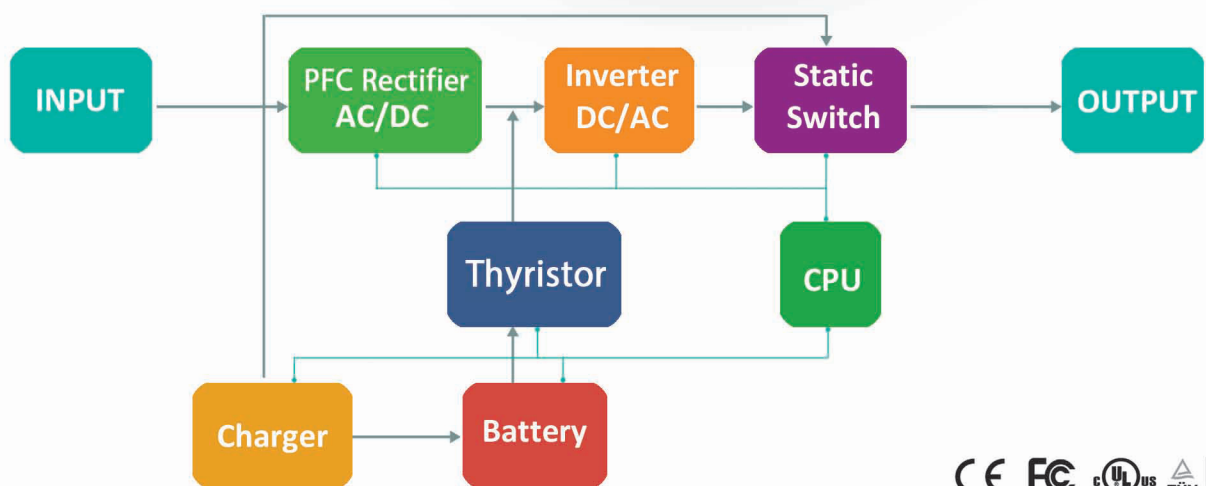


True On Line Double Conversion
Wide Input Voltage Range
Full DSP Control Technology
Long Back up Charger
Input Power Factor: ≥ 0.98
Output Power Factor: 0.9
MTBF: 100000 Hours
Full DSP Control

Features



Block Diagram of D Series



Features

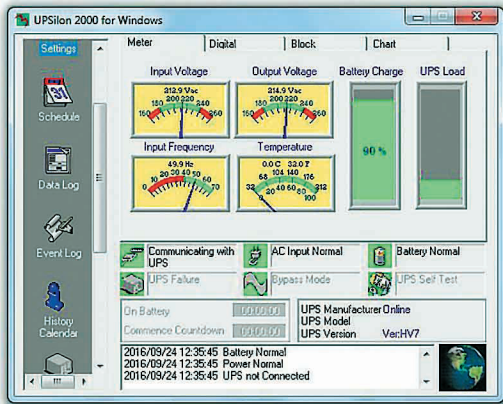
- High Performance System
- Double Conversion Design
- True Sine Wave Output
- Full DSP Control
- Wide Input Voltage Range
- 4 User Configurable Voltage Choices
- Input Power Factor : ≥ 0.98
- Compatibility- Internet/Phone/Fax/Modem/ DSL -Data Line Surge Suppression
- Parallel Redundant up to 3 Units available (> 6 KVA)
- Lighting And Surge Protection
- Input Over Voltage Protection
- Output Short circuit Protection
- Superior Overvoltage Protection
- User Friendly Operation
- Intelligent Computer Interface (UpSilon 2000 CD Included)
- Informative LED / LCD Display (UPS Status & Load / Battery Capacity)
- Self Diagnosis System
- Supports Microsoft® Windows 98/2000/NT/XP Linux And More
- Additional Battery Packs For Extra Runtime (0.5~2 hrs)
- SNMP Smart-Card Interface with Remote Control
- Shutdown and Power up Functions
- Long and Extendable Backup Charger
- Output Power Factor : 0.9
- MTBF : 100000 Hours
- Cold Start Protection
- Dual (Auto/manual) Bypass switch



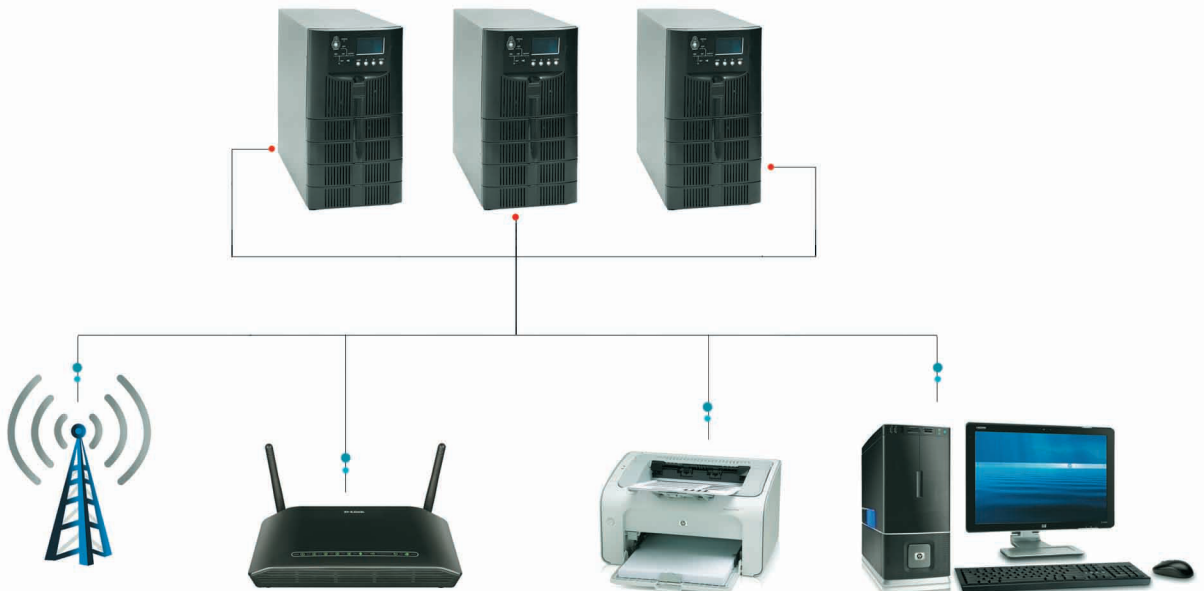
Power Management Solutions- UPS, Software, Cable Providers

Features :

- Provides True RS232 Communication Intelligent Computer Interface- Upsilon 2000
- Supports NetWare, Windows 98/200/NT/ME/XP/Linux
- Remote UPS monitoring through TCP/IP for internet or LAN
- Power failure / low Battery Detection
- Graceful OS shutdown
- Broadcasts / Records abnormal power status
- Programmable shutdown timer and warning period
- Flexible Setting for Auto System Turn on /off
- Graphical display of UPS status
- Automatic files saving
- Sends warning message by e-mail / to pager
- Data log power problem analysis USB Interface
- Power management facility through USB port
- SNMP/HTTP (optional) allows real time control/monitor Via LAN/Web by MIS dept.



Features



Technical Specifications

Models	DTS1KVA	DTL1KVA	DTS2KVA	DTL2KVA	DTS3KVA	DTL3KVA	DTS6KVA	DTL6KVA	DTS10KVA	DTL10KVA	DTL20KVA			
Capacity (VA/W)	1000VA/900W		2000VA/1800W		3000VA/2700W		6000VA/5400W		10000VA/9000W		20000VA/18000w			
System	Topology	True on line Double conversion												
	MTBF	100000 hours												
	Feature	DSP control ,High input and output Power factor												
	Transfer time	Utility to battery	0ms											
		Utility to Bypass	0ms											
Input	Phase	Single phase +Ground									three phase +Ground			
	Rated Voltage	220VAC/230VAC/240VAC									380VAC/400VAC/415VAC			
	Voltage Range	110VAC~288VAC									205~480 VAC			
	Frequency Range	40HZ~70HZ												
	Power Factor	≥98%					≥99%							
	Generator	Supports any generator												
Output	Phase	Single phase + Ground												
	Rated Voltage	220VAC/230VAC/240VAC												
	Voltage Range	±1%												
	Frequency	utility mode	50HZ± 2%											
		Battery mode	50 HZ± 1%											
	Power Factor	0/9					0/9							
	THD	≤2%Linear Load				≤7% Non-linear load			≤%1 linear load		5% Non-linear load			
	Crest Factor	3:1												
Wave form	Pure sine wave													
Efficiency	AC mode	86%	88%	88%	88%	93%	93%	93%	94%					
	Battery mode	84%	86%	86%	86%	92%	92%	92%	92%					
	ECO mode	98%	98%	98%	98%	98%	98%	98%	98%					
Battery	Type	Sealed Lead Acid, maintenance free												
	Voltage	36 VDC				72 VDC			96 VDC				192 VDC	
	Charger Current (A)	1A	8A	1A	8A	1A	8A	1A	10A	1A	10A	10A		
	Recharging Time To 90%	8~10 Hours (standard)												
Protection	Overload	Ac Mode	105%~130% switch to by pass after 1 min					≥110% switch to by pass after 10 min						
			≥150% switch to bypass after 30 sec					≥130% switch to by pass after 1 min						
	Back up Mode		105%~130%shutdown after 10sec					≥150% shutdown after 10min						
			>150% shutdown after 5sec					≥125% shutdown after 10sec						
	Battery Low	Alarm and switch off												
Self-diagnostics	Upon power on and software control													
EPO(optional)	Immediate ups Shutdown													
Alarms	Audio /Video	Line failure , Low Battery Over Load, Faulty system												
Display	LCD	Input, output, Alarm, Battery, Load Information												
Physical	Dimension(W*H*D)mm	145*345*228		190*374*336		190*428*336		250*526*640	250*526*680	250*526*640	250*526*480	250*562*770		
	Net Weight (Kg)	12	6	21	10.5	25.6	11	57	18	65	20	33		
	Input Connection	cable or socket						Hard wire						
	Output Connection	Hard wire and socket						Hard wire						
	External Battery Connection	socket						Hard wire						
	Protection degree	IP20												
Communication Interface	RS232,SNMP Card(optional),USB ,surge protection (optional)													
Environment	Operating Temperature	0C~40°C												
	Storage Temperature	-25C~70°C												
	Humidity	0~95% Non Condensing												
	Altitude	<1000m												
Noise	<45db					<50db					55db			
Conformance	Safety Standard	IEC/EN 62040-1-1												
	EMC Standard	IEC/EN61000-4-2,IEC/EN61000-4-3,IEC/EN61000-4-4,IEC/EN61000-4-5												
	Mark	CE,FCC,TUV,ISO												